



Monohydroxylated metabolites of the K2 synthetic cannabinoid JWH-073 retain intermediate to high cannabinoid 1 receptor (CB1R) affinity and exhibit neutral antagonist to partial agonist activity

Lisa K. Brents^a, Anna Gallus-Zawada^b, Anna Radomska-Pandya^b, Tamara Vasiljevic^c, Thomas E. Prisinzano^c, William E. Fantegrossi^a, Jeffery H. Moran^{a,d}, Paul L. Prather^{a,*}

^a Department of Pharmacology and Toxicology, University of Arkansas for Medical Sciences, Little Rock, AR 72205, USA

^b Department of Biochemistry and Molecular Biology, University of Arkansas for Medical Sciences, Little Rock, AR 72205, USA

^c Department of Medicinal Chemistry, The University of Kansas, Lawrence, KS 66045-7582, USA

^d Public Health Laboratory, Arkansas Department of Health, Little Rock, AR 72205, USA

ARTICLE INFO

Article history:

Received 27 August 2011

Accepted 3 January 2012

Available online 18 January 2012

Keywords:

K2/Spice

JWH-073

CB1

Cannabinoid

Synthetic cannabis

Obesity

ABSTRACT

K2 and several similar purported “incense products” spiked with synthetic cannabinoids are abused as cannabis substitutes. We hypothesized that metabolism of JWH-073, a prevalent cannabinoid found in K2, contributes to toxicity associated with K2 use. Competition receptor binding studies and G-protein activation assays, both performed by employing mouse brain homogenates, were used to determine the affinity and intrinsic activity, respectively, of potential monohydroxylated (M1, M3–M5) and monocarboxylated (M6) metabolites at cannabinoid 1 receptors (CB1Rs). Surprisingly, M1, M4 and M5 retain nanomolar affinity for CB1Rs, while M3 displays micromolar affinity and M6 does not bind to CB1Rs. JWH-073 displays equivalent efficacy to that of the CB1R full agonist CP-55,940, while M1, M3, and M5 act as CB1R partial agonists, and M4 shows little or no intrinsic activity. Further *in vitro* investigation by Schild analysis revealed that M4 acts as a competitive neutral CB1R antagonist ($K_b \sim 40$ nM). In agreement with *in vitro* studies, M4 also demonstrates CB1R antagonism *in vivo* by blunting cannabinoid-induced hypothermia in mice. Interestingly, M4 does not block agonist-mediated responses of other measures in the cannabinoid tetrad (e.g., locomotor suppression, catalepsy or analgesia). Finally, also as predicted by *in vitro* results, M1 exhibits agonist activity *in vivo* by inducing significant hypothermia and suppression of locomotor activity in mice.

In conclusion, the present study indicates that further work examining the physiological effects of synthetic cannabinoid metabolism is warranted. Such a complex mix of metabolically produced CB1R ligands may contribute to the adverse effect profile of JWH-073-containing products.

© 2012 Elsevier Inc. All rights reserved.

1. Introduction

K2, Spice and a variety of similar “incense products” (hereafter referred to collectively as “K2”) are currently emerging drugs of abuse with psychotropic effects mimicking those of marijuana [1–3]. K2 is made by adulterating plant matter with any of several diverse mixtures of synthetic cannabinoids, which are molecules that act in the brain similarly to Δ^9 -tetrahydrocannabinol (Δ^9 -THC), the major psychoactive molecule present in marijuana.

Many of the most prevalent of these synthetic cannabinoids are structurally distinct relative to Δ^9 -THC (Fig. 1A and B) and individual K2 products are often quite variable in composition and unpredictable in content. For example, one study details the analytical detection of 11 different synthetic cannabinoids across 40 batches of 16 different incense products in various combinations and proportions from brand to brand and from batch to batch, even within brands [4]. Many K2 components were previously unregulated by legislative authorities in the U.S., and K2 use is undetectable by standard drug urine tests. Reportedly, these properties contribute to the motivation for K2 use by individuals seeking to attain the mood-altering effects of cannabis, while evading detection, prosecution and potential incarceration [5]. Compared to marijuana, K2 use is associated with an apparently higher prevalence of severe adverse effects, such as hypertension, tachycardia, hallucinations, agitation, seizures and panic attacks that often require immediate medical care [6–12]. The American

Abbreviations: AAPCC, American Association of Poison Control Centers; BSA, bovine serum albumin; CB1R, cannabinoid 1 receptor; Δ^9 -THC, delta-9-tetrahydrocannabinol; GDP, guanosine diphosphate; GTP γ S, guanosine 5'-O-[gamma-thio]triphosphate; GPCR, G-protein coupled receptor; USDEA, United States Drug Enforcement Administration; USFDA, United States Food and Drug Administration.

* Corresponding author. Tel.: +1 501 686 5512; fax: +1 501 686 5521.

E-mail address: PratherPaulL@uams.edu (P.L. Prather).

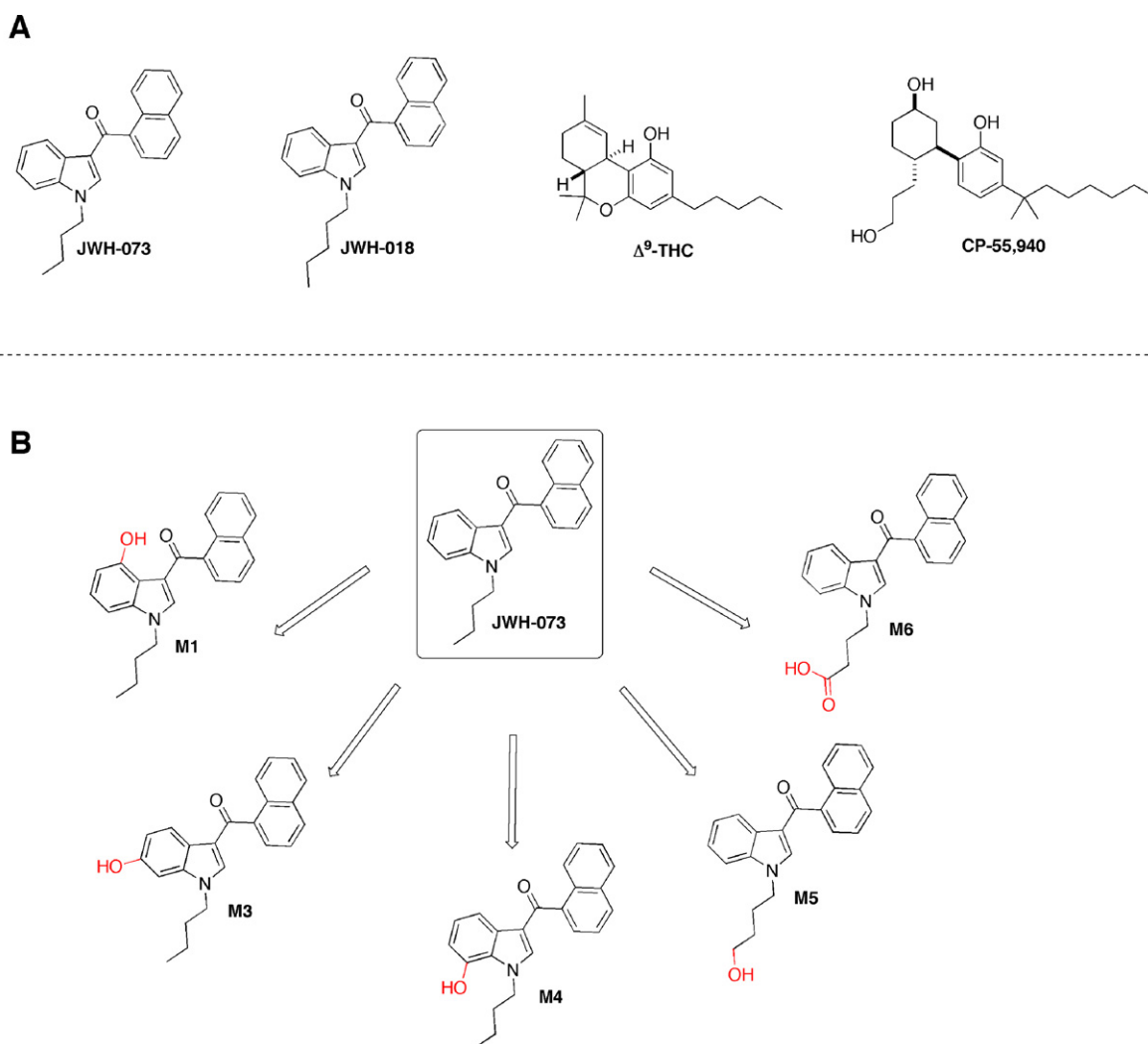


Fig. 1. Cannabinoids examined in the present study. A. Structures of significant cannabinoids discussed and utilized in the present work. B. Structures of JWH-073 [(1-butyl-1H-indole-3-yl)-1-naphthalenyl-methanone] and its potential metabolites, here designated M1 [(1-butyl-4-hydroxy-1H-indole-3-yl)(naphthalen-1-yl-methanone)], M3 [(1-butyl-6-hydroxy-1H-indole-3-yl)(naphthalen-1-yl-methanone)], M4 [(1-butyl-7-hydroxy-1H-indole-3-yl)(naphthalen-1-yl-methanone)], M5 [1-(4-hydroxybutyl-1H-indole-3-yl)(naphthalen-1-yl)-methanone] and M6 [4-(3-(1-naphthoyl)-1H-indole-1-yl)-1-butanolic acid], examined for CB1R affinity and activity.

Association of Poison Control Centers (AAPCC) reported handling 2874 calls in the year 2010 regarding toxicities experienced by individuals after using K2 [13]. Data and reports such as these prompted the United States Drug Enforcement Administration (USDEA) to temporarily classify five common K2 synthetic cannabinoids (JWH-018, JWH-073, JWH-200, CP-47,497, and cannabicyclohexanol) as Schedule I substances on March 1, 2011, until greater understanding regarding the health consequences of their use can be established [14]. Despite this ban, as of November 30, 2011, a reported 6348 calls regarding K2 use have been made to the AAPCC in 2011 alone [15], which is more than double the 2010 report, indicating an apparent persistence of K2 use that results in adverse effects [5,16]. All of these data are particularly alarming given the recent finding that one in nine high school seniors admitted to using K2 over the past year, making K2 the second most frequently used illicit drug, after marijuana, among high school seniors [17].

Synthetic cannabinoids found in K2, as well as Δ^9 -THC and other cannabinoids, induce psychotropic effects by binding and activating cannabinoid 1 receptors (CB1Rs) in the CNS [18,19]. CB1Rs are G-protein coupled receptors (GPCRs) found in highest abundance in the brain, and in lesser amounts in the liver [20], muscle and adipose tissues [21], gastrointestinal tract [22], bone

[23], and reproductive system [24]. Most scientific data available regarding K2 to date has focused on determining product composition [4,25], detecting useful biomarkers for compound detection in urine and serum [26–28], and reporting commonly observed adverse clinical effects [10,11]. However, there is a general lack of knowledge concerning K2 metabolism, pharmacology and toxicology.

One synthetic cannabinoid often present in K2 is JWH-073 [25,29,30]. JWH-073 is a member of the JWH aminoalkylindole family, which was originally synthesized to study the endocannabinoid system [31]. “Co-abuse” of JWH-073 with JWH-018 (a commonly abused CB1R full agonist that is structurally similar to JWH-073) has been anecdotally reported to reduce JWH-018-induced anxiety, resulting in a more “mellow”, cannabis-like high compared to use of JWH-018 alone [32].

Although little is known concerning the biotransformation of the synthetic cannabinoids present in K2, initial studies have demonstrated that several Phase I monohydroxylated and carboxylated metabolites of both JWH-018 and JWH-073 are the major metabolites excreted in the urine of K2 users [26–28,33,34]. Recently, our laboratory reported that several monohydroxylated JWH-018 metabolites unexpectedly retain high affinity and intrinsic activity at CB1Rs [35], leading us to suggest that these

and/or additional active metabolites likely contribute to the mechanism of K2 toxicity. Here, we hypothesize that biotransformation of JWH-073 produces similar metabolites (Fig. 1) possessing high affinity and/or activity at CB1Rs, resulting in complex interactions with other synthetic cannabinoids and their metabolites present in K2. The combined action of all active synthetic cannabinoids formed likely produces an “entourage effect” that contributes to the increased incidence of severe adverse effects observed with K2 relative to marijuana use. Therefore, we first examined the *in vitro* affinity and activity of one carboxylated and four monohydroxylated derivatives of JWH-073 at CB1Rs. These initial findings led us to further characterize the *in vitro* and *in vivo* pharmacology of two molecules, M1 and M4, for potential actions as a CB1R agonist and antagonist, respectively.

2. Methods

2.1. Materials

All compounds were stored at -20°C , thawed and diluted in vehicle for use in subsequent experiments. JWH-073, M1, M3–M6 (Fig. 1) were purchased from Cayman Chemical (Ann Arbor, MI), and diluted to a stock solution with a final concentration of either 10^{-2} M (for [^{35}S]GTP γ S binding assays) or 10^{-3} M (for competition receptor binding) in 100% ethanol. JWH-018 was synthesized as previously described [36–38] and validated by [^1H] Nuclear Magnetic Resonance (NMR), [^{13}C] NMR, Distortionless Enhancement by Polarization Transfer (DEPT)-135, Heteronuclear Single Quantum Correlation (HSQC) spectrometry, and mass spectrometry (MS). JWH-018 was diluted to a stock solution of 10^{-2} M with 100% ethanol. Δ^9 -THC was supplied by the National Institute on Drug Abuse (NIDA, Bethesda, MD). WIN-55,212-2, CP-55,940, AM251, and O-2050 were purchased from Tocris Bioscience (Ellisville, MO), and SR141716 (Rimonabant) was purchased from Cayman Chemical. AM251, O-2050, and Rimonabant were diluted to 10^{-2} M with dimethyl sulfoxide (DMSO), while Δ^9 -THC and CP-55,940 were diluted to 10^{-2} M and WIN-55,212-2 to 10^{-3} M in 100% ethanol. GTP γ S and GDP used in the [^{35}S]GTP γ S assay were purchased from EMD Chemical (Gibbstown, NJ) and Sigma Aldrich (St. Louis, MO), respectively, and dissolved in water to a stock concentration of 10^{-2} M. Adenosine deaminase from bovine spleen (Type IX, ammonium sulfate suspension) was purchased from Sigma–Aldrich (St. Louis, MO), and diluted in 20 mM HEPES buffer to 100 units/mL. [^3H]CP-55,940 (144.0 Ci/mmol) was purchased from Perkin Elmer (Waltham, MA) and [^{35}S]GTP γ S (1250 Ci/mmol) was purchased from American Radiolabeled Chemicals (St. Louis, MO). For all *in vivo* studies, cannabinoids were dissolved and administered in a vehicle consisting of a 1:1:18 ratio of absolute ethanol:emulphor:physiological saline, and injected in a volume equal to 10 mL/kg.

2.2. Membrane preparation

Mouse brain homogenates for *in vitro* assays were prepared as previously described [39]. Briefly, whole brains were harvested from B6SJL mice, snap-frozen in liquid nitrogen and stored at -80°C . On the day membrane homogenates were to be prepared, brains were thawed on ice, then pooled in a 40 mL Dounce glass homogenizer and suspended in 5 volumes of ice cold homogenization buffer (50 mM HEPES, pH 7.4, 3 mM MgCl_2 , and 1 mM EGTA). Brains were then subjected to 10 complete strokes with an A pestle, followed by centrifugation at $40,000 \times g$ for 10 min at $+4^{\circ}\text{C}$. Resulting supernatants were discarded, and the pellet was resuspended, homogenized and centrifuged similarly twice more, with supernatants being discarded. For the final resuspension and homogenization with a B pestle, ice-cold 50 mM HEPES was used

in place of homogenization buffer, and homogenates were aliquoted and stored at -80°C . Protein concentrations of homogenates were determined using the BCATM Protein Assay (Thermo Scientific, Rockford, IL).

2.3. Competition receptor binding assay

Competition receptor binding was performed as previously described [40]. Briefly, 50 μg of mouse brain homogenates were incubated for 90 min to attain equilibrium binding at room temperature with 0.2 nM [^3H]CP-55,940, 5 mM MgCl_2 , and either increasing cannabinoid concentrations (0.1 nM to 10 μM), 10 μM WIN-55,212-2 (for non-specific binding) or vehicle (for total binding), in triplicate, in a volume of 1 mL of buffer containing 50 mM Tris, 0.05% bovine serum albumin (BSA) and 1% ethanol vehicle. Reactions were terminated by rapid vacuum filtration through Whatman GF/B glass fiber filters, followed by five washes with ice-cold buffer (50 mM Tris, 0.05% BSA). Filters were immediately placed into 7 mL scintillation vials to which 4 mL of ScintiVerseTM BD Cocktail scintillation fluid (Fisher Scientific, Fair Lawn, NJ) was added. Bound radioactivity was determined after overnight incubation at room temperature and shaking, by liquid scintillation spectrophotometry with an efficiency of 44% (Tri Carb 2100 TR Liquid Scintillation Analyzer, Packard Instrument Company, Meriden, CT). Specific binding is expressed as total binding minus non-specific binding, and is graphed for each data point as a percentage of specific binding occurring in the absence of any competitor.

2.4. [^{35}S]GTP γ S binding assay

[^{35}S]GTP γ S binding was performed as previously described [35]. Briefly, 25 μg of mouse brain homogenates were incubated for 30 min at 30°C with 0.1 nM [^{35}S]GTP γ S, 10 μM GDP, and either cannabinoid \pm antagonist, 10 μM unlabeled GTP γ S (non-specific binding) or vehicle (total binding), in triplicate, in a volume of 1 mL of buffer containing 20 mM HEPES, 10 mM MgCl_2 , 100 mM NaCl, 20 units/L adenosine deaminase, 0.05% BSA and the appropriate DMSO (0.1%) and/or ethanol ($\leq 0.2\%$) vehicle. Assay buffer containing 100 mM KCl, instead of 100 mM NaCl, was used to increase basal G-protein activity in experiments examining inverse agonism. Reactions were terminated by quick vacuum filtration through Whatman GF/B glass fiber filters, followed by five washes with ice-cold buffer (20 mM HEPES, 0.05% BSA). Filters were immediately placed into 7 mL scintillation vials to which 4 mL of ScintiVerseTM BD Cocktail scintillation fluid was added. Bound radioactivity was determined after overnight incubation at room temperature and shaking by liquid scintillation spectrophotometry with an efficiency of 93% (Tri Carb 2100 TR Liquid Scintillation Analyzer, Packard Instrument Company, Meriden, CT). Specific binding is expressed as picomoles of [^{35}S]GTP γ S bound per milligram of protein.

2.5. Animal care and use

All studies were carried out in accordance with the Declaration of Helsinki and with the Guide for Care and Use of Laboratory Animals as adopted and promulgated by the National Institutes of Health. Experimental protocols were approved by the Animal Care and Use Committee at the University of Arkansas for Medical Sciences (Animal Use Protocol #3155).

Prior to surgery (see below), male NIH Swiss mice (Harlan Sprague Dawley, Inc., Indianapolis, IN), weighing approximately 25–30 g, were housed 3 animals per Plexiglas[®] cage (15.24 cm \times 25.40 cm \times 12.70 cm) in a temperature-controlled room in an Association for Assessment and Accreditation of Laboratory Animal Care (AAALAC) accredited animal facility at the University

of Arkansas for Medical Sciences. Room conditions were maintained at $22 \pm 2^\circ\text{C}$ and 45–50% humidity. Lights were set to a 12-h light/dark cycle. Animals were fed Lab Diet rodent chow (Laboratory Rodent Diet #5001, PMI Feeds, Inc., St. Louis, MO) and water *ad libitum* throughout testing. Animals were acclimated to the laboratory environment for ~ 7 days prior to experiments, and to the biotelemetry chambers for at least 2 h prior to initiation of data acquisition. All test conditions used groups of 5 or 6 mice, and all mice were drug-naïve (with the exception of surgical anesthetics) prior to testing.

2.6. Cannabinoid tetrad

Cannabinoid effects on core temperature and locomotor activity were measured using surgically-implanted biotelemetry probes. Following appropriate anesthetization with ketamine (100 mg/kg, intraperitoneal [i.p.]) and xylazine (10 mg/kg, i.p.), the abdominal area of each mouse was shaved and sanitized with iodine swabs. A rostral–caudal cut approximately 1.5 cm in length was made with skin scissors, providing access to the intraperitoneal cavity. A cylindrical glass-encapsulated radiotelemetry probe (model ER-4000 E-Mitter, Mini Mitter Co., Inc., Bend, OR) was then inserted, and the incision was closed using absorbable 5-0 chromic gut suture material. At least 7 days were imposed between surgery and experimental observation of cannabinoid effects to allow incisions to heal and mice to recover normal body weights. Following surgery, implanted mice were individually housed in Plexiglas® mouse cages (15.24 cm \times 25.40 cm \times 12.70 cm) for the duration of all temperature and locomotor activity experiments. Implanted transmitters produced activity- and temperature-modulated signals that were transmitted to a receiver (model ER-4000 Receiver, Mini Mitter Co., Inc., Bend, OR) underneath each mouse cage. Receivers were housed in light- and sound-attenuating cubicles (Med Associates model ENV-022MD, St. Albans, VT) equipped with exhaust fans, which further masked ambient laboratory noise. On experimental days, mice were weighed, marked, and returned to their individual cages during which at least 1 h of baseline data were collected. Cannabinoid doses were then calculated and prepared for injection. Animals were subsequently removed from their cage and administered an intraperitoneal injection with the indicated doses of JWH-018, JWH-073, M1, M4, JWH-018 plus M4, or an equivalent volume of vehicle. Mice were then placed into a new cage with fresh bedding to stimulate exploratory behavior. Temperature and locomotor activity data were collected at regular 5-min intervals and processed simultaneously by the Vital View data acquisition system (Mini Mitter Co., Inc., Bend, OR) for at least 10 h.

Analgesia was measured as tail-flick latency using the EMDIE-TF6 radiant heat apparatus (Emdie Instrument Co., Montpelier, VA). For each trial, mice were positioned on the stage of apparatus, while the tail was extended into a groove to break a photobeam. Beginning at $t = 0$, a button was depressed to begin a timer and illuminate a radiant heat source directed onto the dorsal surface of the tail, approximately 2 cm from its origin from the body. Movement of the tail at any point after the beginning of the trial broke the photobeam, stopped both the heat source and the timer, and ended the trial. One trial per mouse per time point was performed. Sensitivity and light intensity were set at 150 and 369, respectively (calibrated to produce a tail flick latency between 2 and 4 s for untreated mice), and maximum time for each trial was 10 s. Tail-flick latency was measured at 0, 10, 30, and 60 min after either cannabinoid or vehicle administration.

Catalepsy was measured by the horizontal bar test, which utilized a cylindrical steel bar (0.5 cm in diameter) that was suspended 4.0 cm above and horizontal to a Plexiglas platform. To begin the test trial, a mouse was positioned with its forelimbs on

the horizontal bar and its hindlimbs on the platform, in such a way that the mouse assumed a rearing posture. Upon placement on the catalepsy bar, a timer was started, and counted until the mouse removed both of its paws from the bar and assumed a non-rearing posture. A single trial per mouse per time point was performed, and the maximum time allowed on the bar was 30 s. Catalepsy scores were measured at 0, 10, 30 and 60 min after administration of vehicle or cannabinoid.

2.7. Statistical analysis

Curve fitting and statistical analyses for *in vitro* experiments were performed using GraphPad Prism version 5.0b (GraphPad Software, Inc., San Diego, CA). The Cheng–Prusoff equation [41] was used to convert the experimental IC_{50} values obtained from competition receptor binding experiments to K_i values, a quantitative measure of receptor affinity. Non-linear regression for one-site competition was used to determine the IC_{50} for competition receptor binding. Curve fitting of concentration–effect curves via non-linear regression was also employed to determine the EC_{50} (a measure of potency) and E_{max} (a measure of efficacy) for [^{35}S]GTP γS concentration–effects experiments. A power equation based on the Cheng–Prusoff equation was used to determine the K_b of M4 from its IC_{50} to inhibit an EC_{90} concentration of CP-55,940 [42]. Schild analysis as previously described by Thomas et al. [43] was also performed to determine K_b and Schild slope for the ability of M4 to shift the JWH-018 concentration effect curves for G-protein activation. Data are expressed as mean \pm SEM. The Student's *t*-test was used to determine statistical significance ($P < 0.05$) between two groups, while a one-way ANOVA, followed by Tukey's Multiple Comparison *post-hoc* test, was used to determine statistical significance ($P < 0.05$) between three or more groups.

For core body temperature experiments, the area under the curve (AUC) was calculated using a trapezoidal rule from 0 to 500 min, and statistical significance ($P < 0.05$) was determined using a one-way ANOVA, followed by Tukey's HSD *post-hoc* test. For locomotor activity, total locomotor counts were summed from 0 to 800 min. Because locomotor, analgesia and catalepsy data were not normally distributed, Kruskal–Wallis one-way ANOVA on ranks were performed, and all pair-wise comparisons were then made using the Tukey's HSD tests. *In vivo* statistical calculations were performed using SigmaStat 3 (Systat Software, Inc., San Jose, CA).

3. Results

3.1. JWH-073, M1, M4, and M5 bind to CB1Rs with intermediate to high affinity

Saturation binding experiments using the radiolabeled, high-affinity cannabinoid agonist [^3H]CP-55,940 determined that mouse brain homogenates employed for these experiments contain a CB1R density of 2.44 ± 0.15 pmol/mg protein, to which [^3H]CP-55,940 binds with a K_d of 0.37 ± 0.07 nM ($n = 3$). To determine the affinity (K_i) of JWH-073, M1, and M3–M6 (Fig. 1) for CB1Rs, initial competition receptor binding studies with [^3H]CP-55,940 were conducted (Fig. 2, Table 1). Specifically, the ability of increasing concentrations of each compound to displace [^3H]CP-55,940 from CB1Rs present in mouse brain homogenates was examined. In agreement with previous reports [44], JWH-073 bound to CB1Rs with high affinity (12.9 ± 3.4 nM, $n = 6$, Table 1). Interestingly, M1 also displayed remarkably high affinity for CB1Rs, equivalent to that of the parent compound (14.1 ± 3.5 nM, $n = 3$). The affinities of M4 and M5 for CB1Rs were slightly lower, but still in the intermediate nanomolar range (122.2 ± 16.2 nM and 224.2 ± 9.0 nM, respectively, $n = 3$ –4), predicting that even if relatively low concentrations of these

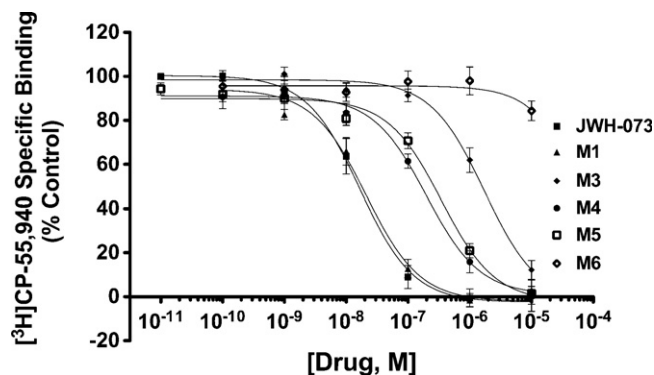


Fig. 2. JWH-073, M1, M3, M4, M5, but not M6, bind to CB1R receptors. In competition receptor binding assays, JWH-073, M1, M3, M4, and M5 completely displaced [3 H]CP-55,940 from CB1Rs in mouse brain homogenates with nanomolar (JWH-073, M1, M4, M5) to micromolar (M3) affinity, while M6 displaced less than 10% [3 H]CP-55,940 specific binding, signifying M6 has little or no CB1R affinity ($n = 3-6$).

compounds are formed *via* metabolism, they likely produce physiologically relevant effects *via* binding and modulation of CB1R activity *in vivo*. M3 bound to CB1Rs with a low micromolar affinity ($1.28 \pm 0.47 \mu\text{M}$, $n = 4$), while concentrations of M6 as high as $10 \mu\text{M}$ produced less than 10% displacement of [3 H]CP-55,940 specific binding ($n = 3$), signifying little or no CB1R affinity.

3.2. M1, M3 and M5 act as CB1R partial agonists with equivalent efficacy to stimulate G-protein activity, while M4 lacks intrinsic activity

The intrinsic activity of JWH-073, M1, and M3–M6 at CB1Rs was next determined by employing the [35 S]GTP γ S binding assay, which measures G-protein activation, in mouse brain homogenates. Initially, the G-protein activation induced by a receptor-saturating concentration ($10 \mu\text{M}$) of each compound was examined (Fig. 3A, Table 2). JWH-073 displayed equivalent efficacy relative to the full CB1R agonist, CP-55,940 (0.28 ± 0.03 vs. 0.32 ± 0.02 pmol/mg, respectively, $n = 3-5$). M1, M3 and M5 surprisingly partial agonist activity (0.14 ± 0.01 , 0.11 ± 0.02 , and 0.16 ± 0.02 pmol/mg, respectively, $n = 3-4$), producing greater than or equivalent activation of G-proteins relative to that produced by Δ^9 -THC (0.08 ± 0.00 pmol/mg). In contrast, M4 and M6 produced negligible G-protein activation in mouse brain homogenates. Interestingly, $10 \mu\text{M}$ THC (Fig. 3A) produces less G-protein activation than a $1 \mu\text{M}$ concentration (Fig. 3B). These data parallel our observations that in this assay, under these experimental conditions, THC consistently exhibits a bi-phasic concentration–effect curve with concentrations greater than $1 \mu\text{M}$ producing less activation than lower concentrations examined (see Fig. 4).

To confirm that CP-55,940, JWH-073, M1, M3 and M5 produced G-protein activation *via* specific interaction with CB1Rs, the effect of co-administration with a CB1R-selective neutral antagonist

Table 1
Comparison of CB1R affinity with potency and efficacy for G-protein activation produced by cannabinoid ligands.

Drug	[3 H]CP binding	[35 S]GTP γ S binding	
	K_i (nM)	EC_{50} (nM)	E_{max} (pmol/mg)
CP-55,940	$0.26 \pm 0.1^{\dagger}$	7.5 ± 1.8	0.26 ± 0.01^a
JWH-073	12.9 ± 3.4	276.5 ± 65.3	0.27 ± 0.01^a
M1	14.1 ± 3.5	112.9 ± 29.2	0.14 ± 0.01^b
Δ^9 -THC	$15.3 \pm 4.5^{\dagger}$	77.0 ± 29.9	0.08 ± 0.01^c

† Values previously reported [35].

^{a,b,c} Values designated by different letters are significantly different.

$P < 0.05$, one-way ANOVA, Tukey's *post-hoc* test; reported as mean \pm SEM, $n = 3-4$.

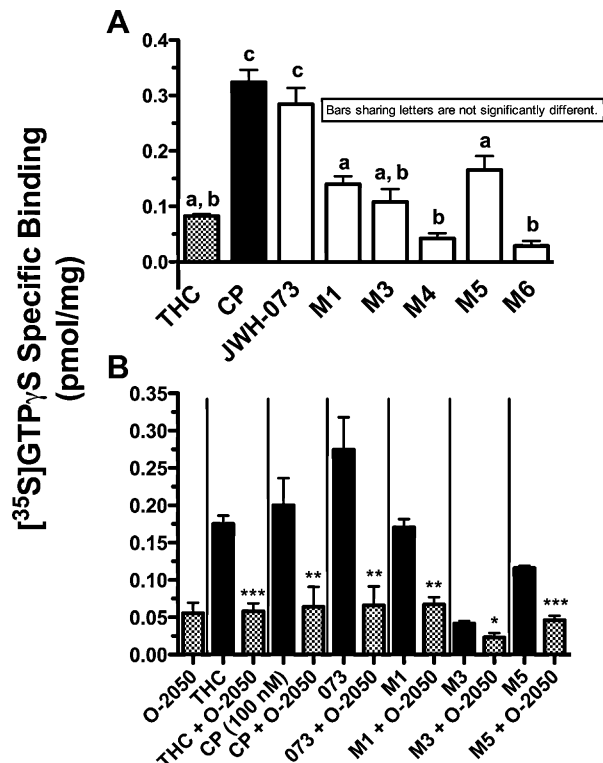


Fig. 3. JWH-073, M1, M3 and M5, but not M4, activate CB1Rs in mouse brain homogenates. A. A receptor-saturating concentration ($10 \mu\text{M}$) of JWH-073 in the [35 S]GTP γ S binding assay activated G-proteins in mouse brain homogenates with full agonist activity equivalent to that produced by CP-55,940. M1, M3 and M5, but not M4 or M6, activate G-proteins with efficacy equivalent to that produced by Δ^9 -THC. Values designated by different letters are significantly different ($P < 0.05$, one way ANOVA with Tukey's Multiple Comparison *post-hoc* test, mean \pm SEM, $n = 3-8$). B. Activation of G-proteins in mouse brain homogenates by JWH-073, M1, M3, and M5 ($1 \mu\text{M}$, solid bars) was significantly attenuated by co-incubation with the CB1R-selective antagonist O-2050 ($1 \mu\text{M}$, checkered bars), signifying that JWH-073, M1, M3 and M5 activate G-proteins *via* CB1Rs ($^*P < 0.05$, $^{**}P < 0.01$, $^{***}P < 0.001$ vs. cannabinoid alone, Student's *t*-test, mean \pm SEM, $n = 3-6$). Note: Because of its higher CB1R affinity, 100 nM , instead of $1 \mu\text{M}$, of CP-55,940 was used in the CB1R blockade assay.

O-2050 ($1 \mu\text{M}$) to attenuate EC_{90} concentrations ($1 \mu\text{M}$ for all compounds except CP-55,940, which instead was 100 nM) of the cannabinoids was examined (Fig. 3B, Table 2). The increase in [35 S]GTP γ S binding produced by each of these agonists was

Table 2
G-protein activation by JWH-073 and metabolites, and blockade by the selective CB1R antagonist O-2050.

Drug	[35 S]GTP γ S binding (pmol/mg)			
	$10 \mu\text{M}$	$1 \mu\text{M}$	100 nM	+O-2050 ($1 \mu\text{M}$) [†]
Δ^9 -THC	$0.08 \pm 0.00^{a,b}$	0.17 ± 0.01	ND	$0.06 \pm 0.01^{***}$
CP-55,940 ^{††}	0.32 ± 0.02^c	ND	0.20 ± 0.04	$0.06 \pm 0.03^{**}$
JWH-073	0.28 ± 0.03^c	0.27 ± 0.04	ND	$0.07 \pm 0.02^{**}$
M1	0.14 ± 0.01^a	0.17 ± 0.01	ND	$0.07 \pm 0.01^{**}$
M3	$0.11 \pm 0.02^{a,b}$	0.04 ± 0.00	ND	$0.02 \pm 0.01^*$
M4	0.04 ± 0.01^b	ND	ND	ND
M5	0.16 ± 0.02^a	0.12 ± 0.00	ND	$0.05 \pm 0.01^{***}$
M6	0.03 ± 0.01^b	ND	ND	ND

^{a,b,c} Values designated by different letters are significantly different.

$P < 0.05$, one-way ANOVA with Tukey's *post-hoc* test, reported as mean \pm SEM, $n = 3-8$.

[†] E_{max} of O-2050 alone ($1 \mu\text{M}$) = 0.05 ± 0.01 .

^{††} Due to its high affinity, 100 nM of CP-55,940 was used instead of $1 \mu\text{M}$.

$^*P < 0.05$; $^{**}P < 0.01$; $^{***}P < 0.001$, vs. drug alone, Student's *t*-test, reported as mean \pm SEM, $n = 3-9$.

ND: not determined.

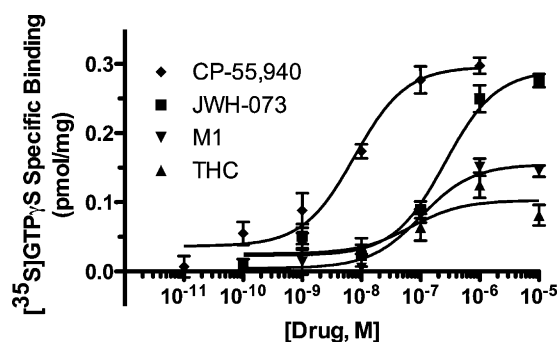


Fig. 4. G-protein activation by JWH-073 and M1 via CB1Rs is concentration-dependent. The potency and maximal efficacy of CP-55,940, JWH-073, M1, and Δ^9 -THC to activate CB1Rs in mouse brain homogenates were determined employing the [35 S]GTP γ S binding assay (mean \pm SEM, $n = 3$ –4).

significantly reduced by O-2050, indicating that these compounds all activated G-proteins in mouse brain homogenates by a CB1R-dependent mechanism.

Concentration–effect studies were conducted to determine a measure of potency (e.g., EC_{50}) for G-protein activation by M1 and to further validate a receptor-mediated mechanism for the intrinsic activity reported (Fig. 4, Table 1). As anticipated, G-protein activation produced by CP-55,940, JWH-073, Δ^9 -THC and M1 was concentration-dependent, with maximal efficacies (e.g., E_{max} values) that agree well with data presented in Fig. 3A. Collectively, these data indicate that CP-55,940 and JWH-073 act as full CB1R agonists, while M1, M3 and M5 exhibit partial agonist activity, and M4 lacks significant intrinsic activity at CB1Rs.

3.3. M4 acts as an *in vitro* competitive neutral antagonist at CB1Rs with nanomolar potency (K_b)

Although M4 bound with intermediate nanomolar affinity to CB1Rs (e.g., 122 nM; Fig. 2), it neither significantly activated nor inhibited basal G-protein activity and thus was devoid of intrinsic activity as measured by this functional assay (Fig. 3). These combined observations intriguingly predict that M4 might serve as a physiologically relevant neutral antagonist at CB1Rs; hence it was selected for further characterization. First, concentrations of M4 alone ranging from 0.1 nM to 10 μ M neither significantly increased (characteristic of agonists), nor decreased (characteristic of inverse agonists), basal [35 S]GTP γ S binding levels (Fig. 5A). These observations indicate that M4 may act as a neutral CB1R antagonist concerning G-protein regulation in mouse brain homogenates. Second, the ability of co-administration with a receptor saturating concentration of M4 (10 μ M) to antagonize effects on G-protein activity produced by three different CB1R agonists (Fig. 5B) or two CB1R inverse agonists (Fig. 5C) was examined. In all cases, co-incubation with M4 significantly antagonized the action of agonists (to increase) or inverse agonists (to reduce) [35 S]GTP γ S binding. Third, a measure of the potency of CB1R antagonism produced by M4 was investigated by determining the antagonist dissociation constant (e.g., K_b) at CB1Rs, for two different agonists employing two alternative but complementary methods (Fig. 6). Initially, the ability of increasing concentrations of M4 to reduce [35 S]GTP γ S binding induced by a single EC_{90} concentration of CP-55,940 (100 nM) in mouse brain homogenates was conducted (Fig. 6A). Co-incubation with M4 produced a concentration-dependent decrease in CP-55,940-induced [35 S]GTP γ S binding. Conversion of the IC_{50} of this curve to a measure of antagonist potency by employing a modified function of the Cheng–Prusoff equation [42], revealed a K_b value 40.3 nM for M4. Schild analysis [43] was additionally conducted to determine not

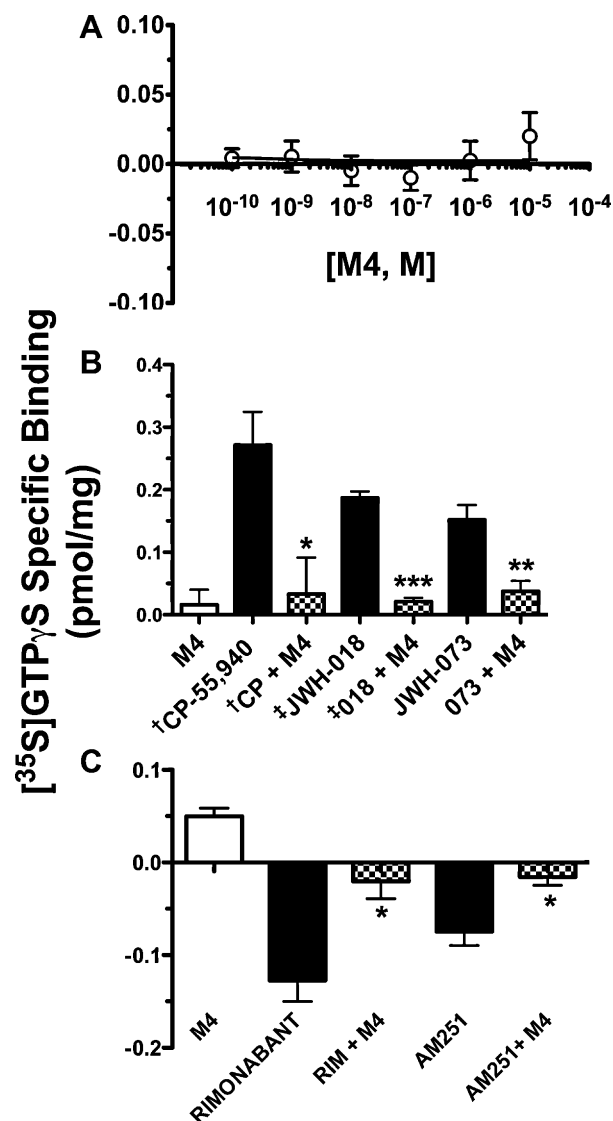


Fig. 5. M4 antagonizes the actions of both CB1R agonists and inverse agonists in mouse brain homogenates, while having no activity when tested alone. A. In the [35 S]GTP γ S binding assay, M4 when examined alone, up to 10 μ M concentrations, showed neither agonist nor inverse agonist activity in mouse brain homogenates. B. M4 (10 μ M) blocked the activity produced by CB1R agonists (100 nM CP, 1 μ M JWH-018, and 500 nM JWH-073) and C. inverse agonists (10 μ M Rimonabant and AM251) (* $P < 0.05$, ** $P < 0.01$, *** $P < 0.001$ vs. cannabinoid alone, Student's t -test, mean \pm SEM, $n = 3$ –6; †These data are of the same data presented in Fig. 6A [†] and B [‡]).

only the K_b value of M4, but also whether M4 produces competitive or non-competitive antagonism at CB1Rs (Fig. 6B). Since JWH-073 and JWH-018 are often co-abused, as noted by their concurrent presence in K2 products, as well as accounts of users combining JWH-018 with JWH-073 in deliberate ratios [32], we examined the ability of M4 to antagonize the G-protein activation produced by JWH-018. The ability of three different M4 concentrations (1, 3, and 10 μ M) to shift the [35 S]GTP γ S binding curve produced by JWH-018 was investigated (Fig. 6B). M4 produced a concentration-dependent shift-to-the-right of the JWH-018 curve without affecting maximal efficacy. Specifically, JWH-018 alone activates G-proteins with an EC_{50} of 8 nM, which is in close agreement with data previously published [35]. However, in the presence of increasing concentrations of M4, the EC_{50} of JWH-018 increased to 178, 263, and 1562 nM. This yielded a Schild plot with a slope of 0.97 (Fig. 6B, inset) and a K_b of 48.1 nM. This value is in close

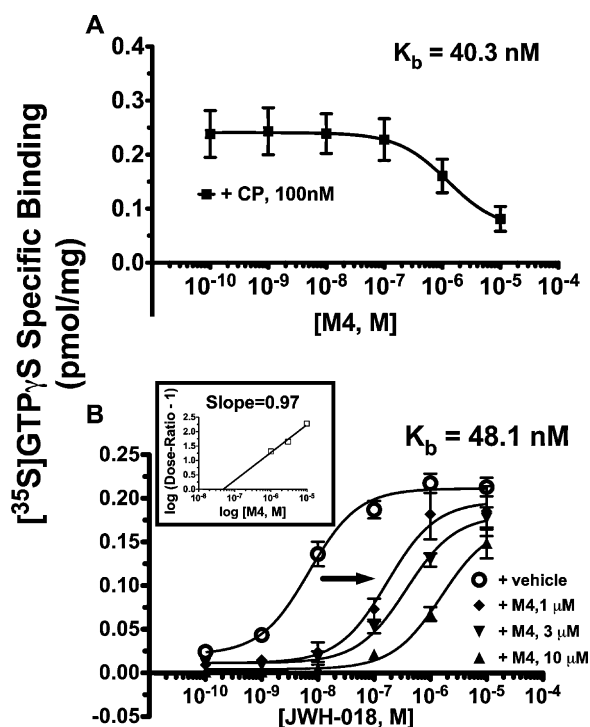


Fig. 6. M4 acts as an *in vitro* competitive neutral antagonist at CB1Rs. A. M4 blocks CB1R activation of G-proteins produced by an EC_{90} concentration of CP-55,940 in mouse brain homogenates with a nanomolar K_b . B. Schild analysis of the concentration-dependent antagonism of JWH-018 by M4 yielded a nanomolar K_b and a slope (not significantly different than 1) that indicates a competitive mechanism of antagonism (*inset*). The arrow indicates significant rightward-shifts in the potency of G-protein activation produced by JWH-018 in response to co-administration with increasing concentrations of M4.

agreement with the K_b determined in Fig. 6A (e.g., 40.3 nM) and, most importantly, clearly indicates that M4 is a potent, competitive antagonist at CB1Rs.

3.4. M1 displays JWH-073-like activity *in vivo*

M1 was tested in NIH Swiss mice for effects on two well-established cannabinoid endpoints, core body temperature and locomotor activity, as was similarly performed in our previous study examining JWH-018 and its M1 derivative [35]. As reported in that study, cannabinoids induce hypothermia and suppress locomotor activity [45]. In the present study, mice were implanted with telemetry probes that simultaneously measure core body temperature and locomotor activity as described previously in

Section 2. Administration of JWH-073 or M1 (10 mg/kg, i.p.) resulted in sharp drops in core body temperature, with the minimum temperatures recorded being $29.74 \pm 1.44^\circ\text{C}$ for JWH-073 and $30.32 \pm 0.66^\circ\text{C}$ for M1 (Fig. 7A). Time to maximal core body temperature reduction (T_{max}) did not differ for the two cannabinoids examined ($54.17 \pm 5.23 \text{ min}$ for the parent compound and $58.00 \pm 4.64 \text{ min}$ for M1), suggesting a similar pharmacokinetic profile. Simultaneously, M1 resulted in a reduction of locomotor activity similar to that observed with administration of JWH-073 (Fig. 7B). Taken together, these data suggest that M1 retains a substantial portion of the *in vivo* activity exhibited by the parent compound.

3.5. M4 antagonizes JWH-018-induced hypothermia *in vivo*

The observation that M4 behaves as a neutral, competitive CB1R antagonist *in vitro* prompted the investigation of its potential CB1R antagonist activity *in vivo*. In the following experiments, M4 (10 mg/kg, i.p.) was co-administered in NIH Swiss mice with JWH-018 (3 mg/kg, i.p.) to determine if M4 antagonizes four different measures of *in vivo* cannabinoid activity, commonly known as the cannabinoid tetrad: hypothermia, locomotor activity suppression (both described in the previous subsection), analgesia, and catalepsy. Previous work in this model showed that JWH-018 (3 mg/kg, i.p.) significantly decreases core body temperature and locomotor activity [35]. Initially, a dose of 10 mg/kg, i.p., of M4 was administered to test its antagonism of the hypothermic effects induced by JWH-018 (3 mg/kg, i.p.). This dose of M4 was chosen for initial *in vivo* experiments because of the striking cannabimimetic effects elicited by 10 mg/kg, i.p. of the structurally similar M1 derivatives of both JWH-018 [35] and JWH-073 (see previous subsection). In the present study, 3 mg/kg of JWH-018 administered i.p. produces hypothermia as indicated by a maximal decrease in core body temperature to $30.28 \pm 0.71^\circ\text{C}$ (Fig. 8A). In marked contrast, M4 resulted in no significant change in body temperature. Significantly, hypothermia induced by JWH-018 was blunted by co-administration with M4 (to $33.09 \pm 0.70^\circ\text{C}$). Although co-administration with M4 did not completely prevent the reduction in body temperature produced by JWH-018, it did significantly blunt JWH-018-induced hypothermia (Fig. 8B). Quantification of this effect is indicated by summation of AUC data generated 0–500 min after injection. Most importantly, these data demonstrate that M4 acts as a CB1R antagonist not only *in vitro*, but also *in vivo*.

Potential antagonism of other JWH-018-induced effects (analgesia, catalepsy, and locomotor suppression) by this dose of M4 was also examined. Co-administration of M4 with JWH-018 (3 mg/kg, i.p.) showed no difference in these assays from JWH-018 alone (Fig. 9). In all cases, the overall ANOVA was significant due to main effects of time ($P = 0.002$ for locomotor activity, $P = 0.004$ for

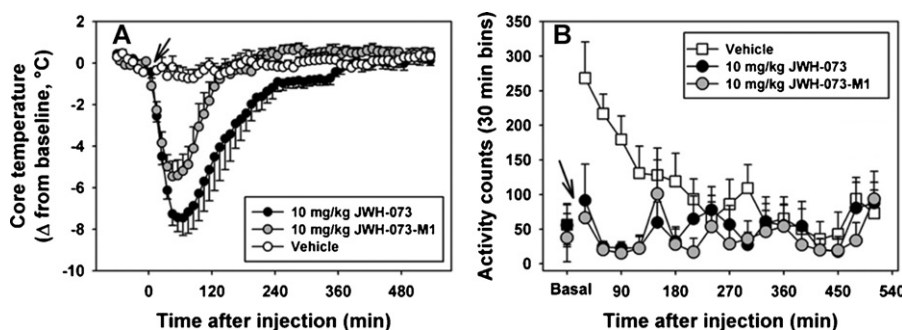


Fig. 7. M1 induces hypothermia and locomotor suppression similar to JWH-073. Time course telemetry data shows that both JWH-073 (10 mg/kg, i.p., black circles) and M1 (10 mg/kg, i.p., gray circles) produce A. robust hypothermia, and B. locomotor suppression, relative to vehicle control. This indicates that M1 retains the partial-to-full potency and efficacy of JWH-073 to produce hypothermia and locomotor suppression. Arrow indicates time of vehicle or cannabinoid administration.

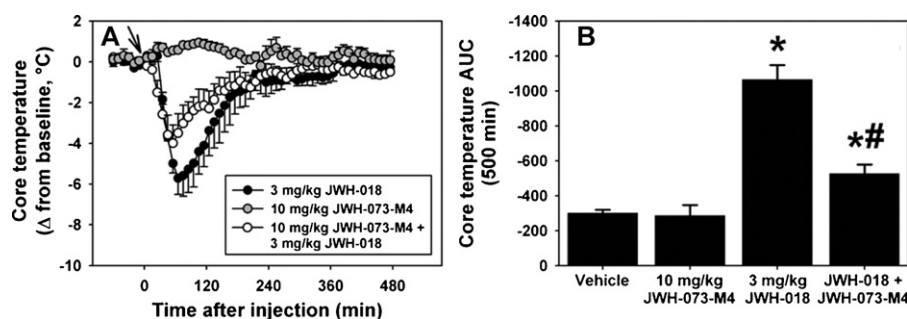


Fig. 8. M4 blunts JWH-018 induced hypothermia in mice. A. Time course telemetry data after administration of JWH-018 (3 mg/kg, i.p., black circles), M4 (10 mg/kg, i.p., gray circles), or co-administration of these doses (white circles). Arrow indicates time of vehicle or cannabinoid administration. B. Area under the curve summation of telemetry data collected 0–500 min after vehicle or cannabinoid administration shows that M4 significantly attenuated hypothermia induced by JWH-018, indicating that M4 displays CB1R antagonism *in vivo* (* $P < 0.05$ vs. vehicle, * $P < 0.05$ vs. JWH-018 alone, one-way ANOVA with Tukey's HSD test, mean \pm SEM, $n = 5$).

analgesia, and $P = 0.003$ for catalepsy), but there were no between-group comparisons at any time point that reached statistical significance.

4. Discussion

This study is the first to report that potential monohydroxylated metabolites of JWH-073 retain physiologically relevant, high (M1), intermediate (M4 and M5) and low (M3) affinity for CB1Rs. M1, M3, and M5 also activate G-proteins in a CB1R-dependent manner with partial agonist activity equivalent to that produced by the major psychoactive constituent in marijuana, Δ^9 -THC. M1 was further characterized for potential *in vivo* activity and, similar to JWH-073, induces hypothermia and suppresses locomotor activity in mice. M4 was also importantly shown to act as a novel competitive neutral CB1R antagonist. Specifically, [35 S]GTP γ S binding experiments demonstrate that co-incubation with M4 blocks modulation of CB1R activity by both agonists and inverse agonists, with no effect on basal G-protein activity when tested alone. M4 antagonizes CB1R-mediated G-protein activation by JWH-018 in a competitive manner with a K_b value of 48 nM. Finally, M4 attenuates JWH-018-induced hypothermia in mice, while an equivalent dose does not antagonize other CB1R-dependent effects that are entirely mediated by CNS-specific CB1Rs. Both *in vitro* and *in vivo* data presented collectively indicate that metabolism of JWH-073 may produce a complex mix of metabolites exhibiting a range of CB1R intrinsic activity that work “in concert” to contribute to the biological actions of JWH-073-containing products. Furthermore, the neutral CB1R antagonist properties of M4 suggest that this molecule might serve as a scaffold for development of a novel class of anti-obesity drugs (discussed below).

The first novel finding reported here is that M1 and M5 retain high and intermediate affinity for CB1Rs, respectively. Furthermore, both compounds act *in vitro* as agonists at CB1Rs, while M1 was also shown to demonstrate CB1R agonist activity *in vivo*. If future comprehensive pharmacokinetic studies confirm that metabolism of JWH-073 produces multiple active metabolites with significant CB1R affinity and activity (such as the ones examined in the present study), these acute actions could result in prolonged, excessive activation of CB1Rs. Furthermore, additive or synergistic actions exerted by multiple active metabolites, combined with the agonist activity of other synthetic cannabinoids present in K2 products, could potentially result in adverse effects rarely observed with marijuana, since Δ^9 -THC is metabolized to only one reported major active metabolite [46].

In addition to acute actions, sustained elevations of active cannabinoids following chronic K2 abuse would be expected to produce adaptive alterations in CB1R signaling [18,47–49] that might interfere with normal endocannabinoid function. For example, prolonged endocannabinoid dysregulation could disrupt a wide variety of physiological functions including mood and cognition [50], appetite and energy homeostasis [51,52], pain sensation [53], immune function [54], bone homeostasis [23] and reproduction [24]. In support of this suggestion, many similar adverse effects are observed following chronic cannabis use [55–57].

It is also possible that prolonged exposure to K2 synthetic cannabinoids and their active metabolites may promote K2 dependence, characterized by a withdrawal syndrome upon abrupt cessation of use. Although the subject of cannabis dependence and withdrawal remains controversial, reliable evidence has accumulated to define a specific marijuana withdrawal syndrome in human subjects [58], occurring with a prevalence of approximately 9% in regular marijuana users [59].

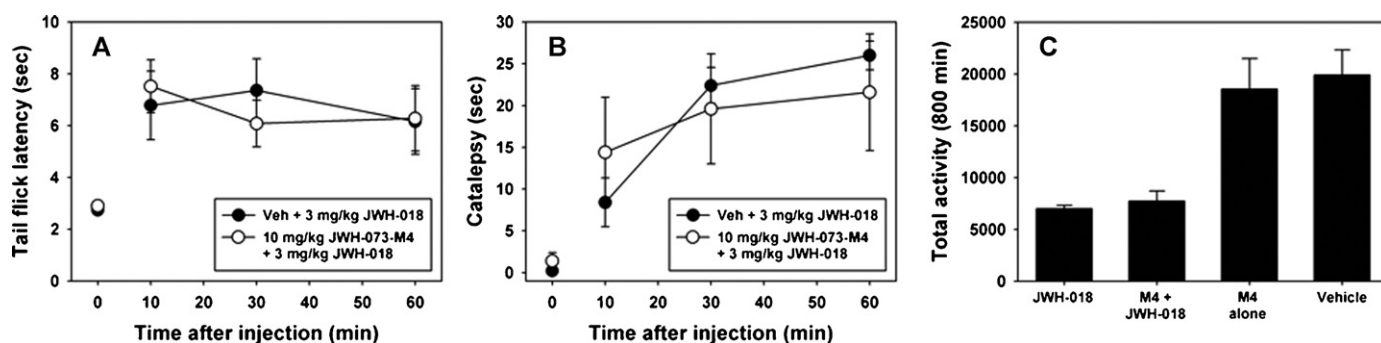


Fig. 9. M4 does not antagonize analgesia, catalepsy or locomotor suppression induced by JWH-018. Administration of JWH-018 (3 mg/kg, i.p., black circles) produces A. robust analgesia (tail flick assay), B. catalepsy, and C. locomotor suppression. Co-administration of M4 (10 mg/kg, i.p., white circles) does not significantly alter any of the JWH-018-induced effects ($P < 0.05$, one-way ANOVA with Tukey's HSD test, mean \pm SEM, $n = 5$ –6).

Selective reduction in the density of cortical CB1Rs has also been reported in chronic cannabis users [60]. Such CB1R down-regulation would presumably result in reduced CB1R signaling, potentially contributing to the development of tolerance. It could therefore be predicted that chronic use of higher efficacy cannabinoids present in K2, coupled with the sustained action of associated active metabolites, might produce similar or even greater adaptations leading to enhanced levels of tolerance and/or dependence relative to chronic cannabis use.

If metabolism of JWH-073 results in accumulation of physiologically relevant concentrations of the CB1R antagonist M4 in the CNS, first-time exposure to JWH-073-containing products may acutely precipitate withdrawal in high-intake cannabis and K2 users. In support of this hypothesis, it is interesting that symptoms of cannabis withdrawal resemble several adverse effects associated with K2 use (e.g., anxiety, aggression, irritability, hypertension) [61,62]. High concentrations of M4 accumulating in the CNS could also promote compensatory escalations in K2 use in order to maintain the subjective, reinforcing effects of K2 use, while production of low or moderate concentrations of this antagonist may explain the “mellowness” attributed to JWH-073 relative to other synthetic cannabinoids [63]. In any case, both acute and chronic cellular responses resulting from use of JWH-073-containing products are possibly influenced by actions produced by a combination of the parent compound and its active metabolites.

Overactivity of the endocannabinoid system appears to contribute to development of obesity and metabolic syndrome [64]. As such, CB1R antagonists/inverse agonists showed great promise as anti-obesity agents. However, the first-in-class drug Rimonabant was denied approval by the United States Food and Drug Administration (USFDA) and was subsequently removed from the European drug market due to severe psychiatric side effects, including depression, anxiety, and increased risk of suicide [65]. Although antagonism of endocannabinoids acting at CB1Rs in the CNS by Rimonabant may cause these adverse reactions [66], recent evidence instead suggests that such psychiatric complications may be primarily associated with inverse agonist properties of these compounds that reduce the constitutive activity of CB1Rs in the CNS [67]. The majority of CB1R antagonists identified to date unfortunately possess inverse agonist activity [68]. However, recent studies in mice demonstrate that compounds acting as neutral CB1R antagonists (and not inverse agonists) also possess anti-obesity properties, but with reduced side effects relative to Rimonabant [69,70]. Therefore, the findings reported here that M4 is a neutral CB1R antagonist suggests that this molecule might serve as a scaffold for development of anti-obesity drugs that reduce an aberrantly high level of endocannabinoid signaling in obese individuals without altering constitutive CB1R activity, possibly resulting in fewer CNS effects.

CB1R antagonists with limited brain penetration also are efficacious anti-obesity agents with reduced adverse psychiatric effects [71]. Notably, M4 blunted, but did not completely block, CB1R-induced hypothermia (Fig. 8). Furthermore, M4 curiously failed to antagonize other CB1R-mediated effects in the cannabinoid tetrad (Fig. 9). These observations might be explained, in part, by a less than adequate dose of M4 selected for the *in vivo* antagonism studies. However, it is also tempting to speculate that M4 does not readily enter the brain to antagonize centrally mediated effects of JWH-018 (e.g., analgesia, catalepsy, and locomotor suppression), but can partially antagonize the effect of CB1R-induced hypothermia, which has been shown to be mediated, in part, by peripheral CB1Rs [72]. Further pharmacokinetic experiments will be required to validate the potential peripherally-restricted properties of M4 before definitive conclusions can be made.

Our group recently reported that several monohydroxylated metabolites of the synthetic cannabinoid JWH-018 retain high CB1R affinity and activity [35]. The current report similarly examined the affinity and activity of several potential JWH-073 metabolites at CB1Rs. Although the present study shows that potential monohydroxylated metabolites of JWH-073 also retain significant affinity and activity, a distinct difference between reports is discovery of M4: a neutral CB1R antagonist with nanomolar affinity and potential significance for development of anti-obesity therapeutics. Regardless of intrinsic activity, metabolites retaining high CB1R affinity have potential to exaggerate or disrupt cannabinoid signaling. The finding that multiple JWH-073 candidate metabolites retain high CB1R affinity and exhibit a range of intrinsic activity provides valuable mechanistic insight and suggests that biotransformation of K2 may contribute to the relatively high rate of severe adverse effects often reported with use of this rapidly emerging drug of abuse.

Acknowledgements

The work was supported by the Association of Public Health Laboratories Award (JHM), US PHS Grant RR020146 (WEF), UAMS Pilot Study Award (PLP) and a Pilot Research Award from the University of Arkansas for Medical Sciences Center for Clinical and Translational Research, supported by grant number 1UL1RR029884 from the National Center for Research Resources (JHM, WEF, and PLP). The funding agencies had no role in study design, data collection and analysis, decision to publish, or preparation of the manuscript.

References

- [1] Vardakou I, Pistos C, Spiliopoulou C. Spice drugs as a new trend: mode of action, identification and legislation. *Toxicol Lett* 2010;197:157–62.
- [2] Auwarter V, Dresen S, Weinmann W, Muller M, Putz M, Ferreiros N. 'Spice' and other herbal blends: harmless incense or cannabinoid designer drugs. *J Mass Spectrom* 2009;44:832–7.
- [3] Seely KA, Prather PL, James LP, Moran JH. Marijuana-based drugs: innovative therapeutics or designer drugs of abuse. *Mol Interv* 2011;11:36–51.
- [4] Hudson S, Ramsey J, King L, Timbers S, Maynard S, Dargan PI, et al. Use of high-resolution accurate mass spectrometry to detect reported and previously unreported cannabinomimetics in herbal high products. *J Anal Toxicol* 2010;34:252–60.
- [5] Vandrey R, Dunn KE, Fry JA, Girling ER. A survey study to characterize use of Spice products (synthetic cannabinoids). *Drug Alcohol Depend* 2012;120:238–41.
- [6] Vearrier D, Osterhoudt KC. A teenager with agitation: higher than she should have climbed. *Pediatr Emerg Care* 2010;26:462–5.
- [7] Muller H, Sperling W, Kohrmann M, Huttner HB, Kornhuber J, Maler JM. The synthetic cannabinoid Spice as a trigger for an acute exacerbation of cannabis induced recurrent psychotic episodes. *Schizophr Res* 2010;118:309–10.
- [8] Muller H, Huttner HB, Kohrmann M, Wielopolski JE, Kornhuber J, Sperling W. Panic attack after spice abuse in a patient with ADHD. *Pharmacopsychiatry* 2010;43:152–3.
- [9] Every-Palmer S. Synthetic cannabinoid JWH-018 and psychosis: an explorative study. *Drug Alcohol Depend* 2011;117:152–7.
- [10] Young AC, Schwarz E, Medina G, Obafemi A, Feng SY, Kane C, et al. Cardio-toxicity associated with the synthetic cannabinoid, K9, with laboratory confirmation. *Am J Emerg Med* 2011. doi: 10.1016/j.ajem.2011.05.013.
- [11] Simmons J, Cookman L, Kang C, Skinner C. Three cases of spice exposure. *Clin Toxicol (Phila)* 2011;49:431–3.
- [12] Schneir AB, Cullen J, Ly BT. Spice girls: synthetic cannabinoid intoxication. *J Emerg Med* 2011;40:296–9.
- [13] Wehrman J. Fake marijuana spurs more than 4,500 calls to U.S. poison centers. Alexandria, VA: American Association of Poison Control Centers; 2011. <<http://www.aapcc.org/dnn/Portals/0/K2releasedec21.pdf>> [accessed 12 May 2011].
- [14] Leonhart MM. Schedules of controlled substances: temporary placement of five synthetic cannabinoids into schedule I. *Federal Register*; 2010 p. 71635–8 <http://www.deadiversion.usdoj.gov/fed_regs/rules/2010/fr1124.htm> [accessed 3 January 2011].
- [15] AAPCC. Synthetic marijuana data, <http://www.aapcc.org/dnn/Portals/0/Synthetic_Marijuana_Data_for_Website_12.12.2011.pdf>; 2011 [accessed 17 December 2011].
- [16] Hu X, Primack BA, Barnett TE, Cook RL. College students and use of K2: an emerging drug of abuse in young persons. *Subst Abuse Treat Prev Policy* 2011;6:16.

- [17] Johnston LD, O'Malley PM, Bachman JG, Schulenberg JE. Marijuana use continues to rise among U.S. teens, while alcohol use hits historic lows. *Ann Arbor, MI: University of Michigan News Service*; 2011. <<http://www.monitoringthefuture.org>> [accessed 16 December 2011].
- [18] Atwood BK, Huffman J, Straiker A, Mackie K. JWH018, a common constituent of 'Spice' herbal blends, is a potent and efficacious cannabinoid CB receptor agonist. *Br J Pharmacol* 2010;160:585–93.
- [19] Jarbe TU, Deng H, Vadivel SK, Makriyannis A. Cannabinergic aminoalkylindoles, including AM678=JWH018 found in 'Spice', examined using drug (Delta9-tetrahydrocannabinol) discrimination for rats. *Behav Pharmacol* 2011;22:498–507.
- [20] Wu HM, Yang YM, Kim SG, Rimonaband, a CB1 inverse agonist, inhibits hepatocyte lipogenesis by activating LKB1 and AMPK axis downstream of G(alpha)i/o inhibition. *Mol Pharmacol* 2011;80:859–69.
- [21] Lindborg KA, Teachey MK, Jacob S, Henriksen EJ. Effects of in vitro antagonism of endocannabinoid-1 receptors on the glucose transport system in normal and insulin-resistant rat skeletal muscle. *Diabetes Obes Metab* 2010;12:722–30.
- [22] Di Marzo V, Piscitelli F. Gut feelings about the endocannabinoid system. *Neurogastroenterol Motil* 2011;23:391–8.
- [23] Rossi F, Bellini G, Luongo L, Torella M, Mancusi S, De Petrocellis L, et al. The endovanilloid/endocannabinoid system: a new potential target for osteoporosis therapy. *Bone* 2011;48:997–1007.
- [24] Bari M, Battista N, Pirazzi V, Maccarrone M. The manifold actions of endocannabinoids on female and male reproductive events. *Front Biosci* 2011;16:498–516.
- [25] Dresen S, Ferreiros N, Putz M, Westphal F, Zimmermann R, Auwärter V. Monitoring of herbal mixtures potentially containing synthetic cannabinoids as psychoactive compounds. *J Mass Spectrom* 2010;45:1186–94.
- [26] Sobolevsky T, Prasolov I, Rodchenkov G. Detection of JWH-018 metabolites in smoking mixture post-administration urine. *Forensic Sci Int* 2010;200:141–7.
- [27] Chimalakonda KC, Moran CL, Kennedy PD, Endres GW, Uzieblo A, Dobrowolski PJ, et al. Solid-phase extraction and quantitative measurement of omega and omega-1 metabolites of JWH-018 and JWH-073 in human urine. *Anal Chem* 2011;83:6381–8.
- [28] Moran CL, Le VH, Chimalakonda KC, Smedley AL, Lackey FD, Owen SN, et al. Quantitative measurement of JWH-018 and JWH-073 metabolites excreted in human urine. *Anal Chem* 2011;83:4228–36.
- [29] Uchiyama N, Kikura-Hanajiri R, Ogata J, Goda Y. Chemical analysis of synthetic cannabinoids as designer drugs in herbal products. *Forensic Sci Int* 2010;198:31–8.
- [30] Penn HJ, Langman LJ, Unold D, Shields J, Nichols JH. Detection of synthetic cannabinoids in herbal incense products. *Clin Biochem* 2011;44:1163–5.
- [31] Huffman JW, Dai D, Martin BR, Compton DR. Design, synthesis, and pharmacology of cannabimimetic indoles. *Bioorg Med Chem Lett* 1994;4:563–6.
- [32] Drugs-Forum. JWH-018 or JWH-073, which do you prefer? Substance Information Network (S.I.N.) Foundation; 2009. <<http://www.drugs-forum.com/forum/showthread.php?t=103276>> [accessed 07 August 2011].
- [33] Moller I, Wintermeyer A, Bender K, Jubner M, Thomas A, Krug O, et al. Screening for the synthetic cannabinoid JWH-018 and its major metabolites in human doping controls. *Drug Test Anal* 2011;3:609–20.
- [34] Grigoryev A, Savchuk S, Melnik A, Moskaleva N, Dzshurko J, Ershov M, et al. Chromatography-mass spectrometry studies on the metabolism of synthetic cannabinoids JWH-018 and JWH-073, psychoactive components of smoking mixtures. *J Chromatogr B Analyt Technol Biomed Life Sci* 2011;879:1126–36.
- [35] Brents LK, Reichard EE, Zimmerman SM, Moran JH, Fantegrossi WE, Prather PL. Phase I hydroxylated metabolites of the K2 synthetic cannabinoid JWH-018 retain in vitro and in vivo cannabinoid 1 receptor affinity and activity. *PLoS ONE* 2011;6:e21917.
- [36] Huffman JW, Zengin G, Wu MJ, Lu J, Hynd G, Bushell K, et al. Structure-activity relationships for 1-alkyl-3-(1-naphthoyl)indoles at the cannabinoid CB(1) and CB(2) receptors: steric and electronic effects of naphthoyl substituents. New highly selective CB(2) receptor agonists. *Bioorg Med Chem* 2005;13:89–112.
- [37] Qi T, Qiu W, Liu Y, Zhang H, Gao X, Liu Y, et al. Synthesis, structures, and properties of disubstituted heteroacenes on one side containing both pyrrole and thiophene rings. *J Org Chem* 2008;73:4638–43.
- [38] Denton JR. One-pot desulfonylative alkylation of n-sulfonyl azacycles using alkoxides generated by phase-transfer catalysis. *Synthesis* 2010;5:775–82.
- [39] Prather PL, Martin NA, Breivogel CS, Childers SR. Activation of cannabinoid receptors in rat brain by WIN 55212-2 produces coupling to multiple G protein alpha-subunits with different potencies. *Mol Pharmacol* 2000;57:1000–10.
- [40] Shoemaker JL, Joseph BK, Ruckle MB, Mayeux PR, Prather PL. The endocannabinoid noladin ether acts as a full agonist at human CB2 cannabinoid receptors. *J Pharmacol Exp Ther* 2005;314:868–75.
- [41] Cheng Y, Prusoff WH. Relationship between the inhibition constant (K_i) and the concentration of inhibitor which causes 50 per cent inhibition (I₅₀) of an enzymatic reaction. *Biochem Pharmacol* 1973;22:3099–108.
- [42] Cheng HC. The power issue: determination of K_B or K_i from IC₅₀. A closer look at the Cheng-Prusoff equation, the Schild plot and related power equations. *J Pharmacol Toxicol Methods* 2001;46:61–71.
- [43] Thomas A, Stevenson LA, Wease KN, Price MR, Baillie G, Ross RA, et al. Evidence that the plant cannabinoid Delta9-tetrahydrocannabinol is a cannabinoid CB1 and CB2 receptor antagonist. *Br J Pharmacol* 2005;146:917–26.
- [44] Aung MM, Griffin G, Huffman JW, Wu M, Keel C, Yang B, et al. Influence of the N-1 alkyl chain length of cannabimimetic indoles upon CB(1) and CB(2) receptor binding. *Drug Alcohol Depend* 2000;60:133–40.
- [45] Smith PB, Compton DR, Welch SP, Razdan RK, Mechoulam R, Martin BR. The pharmacological activity of anandamide, a putative endogenous cannabinoid, in mice. *J Pharmacol Exp Ther* 1994;270:219–27.
- [46] Huestis MA. Human cannabinoid pharmacokinetics. *Chem Biodivers* 2007;4:1770–804.
- [47] Atwood BK, Lee D, Straiker A, Widlanski TS, Mackie K. CP47,497-C8 and JWH073, commonly found in 'Spice' herbal blends, are potent and efficacious CB(1) cannabinoid receptor agonists. *Eur J Pharmacol* 2011;659:139–45.
- [48] Mikasova L, Groc L, Choquet D, Manzoni OJ. Altered surface trafficking of presynaptic cannabinoid type 1 receptor in and out synaptic terminals parallels receptor desensitization. *Proc Natl Acad Sci USA* 2008;105:18596–601.
- [49] Burston JJ, Wiley JL, Craig AA, Selley DE, Sim-Selley LJ. Regional enhancement of cannabinoid CB₁ receptor desensitization in female adolescent rats following repeated Delta-tetrahydrocannabinol exposure. *Br J Pharmacol* 2010;161:103–12.
- [50] Gorzalka BB, Hill MN. Putative role of endocannabinoid signaling in the etiology of depression and actions of antidepressants. *Prog Neuropsychopharmacol Biol Psychiatry* 2011;35:1575–85.
- [51] Li C, Jones PM, Persaud SJ. Role of the endocannabinoid system in food intake, energy homeostasis and regulation of the endocrine pancreas. *Pharmacol Ther* 2011;129:307–20.
- [52] Watkins BA, Hutchins H, Li Y, Seifert MF. The endocannabinoid signaling system: a marriage of PUFA and musculoskeletal health. *J Nutr Biochem* 2010;21:1141–52.
- [53] Karst M, Wippermann S, Ahrens J. Role of cannabinoids in the treatment of pain and (painful) spasticity. *Drugs* 2010;70:2409–38.
- [54] Bisogno T, Di Marzo V. Cannabinoid receptors and endocannabinoids: role in neuroinflammatory and neurodegenerative disorders. *CNS Neurol Disord Drug Targets* 2010;9:564–73.
- [55] Gorzalka BB, Hill MN, Chang SC. Male-female differences in the effects of cannabinoids on sexual behavior and gonadal hormone function. *Horm Behav* 2010;58:91–9.
- [56] Jutras-Aswad D, DiNieri JA, Harkany T, Hurd YL. Neurobiological consequences of maternal cannabis on human fetal development and its neuropsychiatric outcome. *Eur Arch Psychiatry Clin Neurosci* 2009;259:395–412.
- [57] McKallip RJ, Nagarkatti M, Nagarkatti PS. Delta-9-tetrahydrocannabinol enhances breast cancer growth and metastasis by suppression of the antitumor immune response. *J Immunol* 2005;174:3281–9.
- [58] Haney M. The marijuana withdrawal syndrome: diagnosis and treatment. *Curr Psychiatry Rep* 2005;7:360–6.
- [59] Allsop DJ, Norberg MM, Copeland J, Fu S, Budney AJ. The Cannabis Withdrawal Scale development: patterns and predictors of cannabis withdrawal and distress. *Drug Alcohol Depend* 2011;119:123–9.
- [60] Hirvonen J, Goodwin RS, Li CT, Terry GE, Zoghbi SS, Morse C, et al. Reversible and regionally selective downregulation of brain cannabinoid CB(1) receptors in chronic daily cannabis smokers. *Mol Psychiatry* 2011. doi: 10.1038/mp.2011.82.
- [61] Budney AJ, Hughes JR. The cannabis withdrawal syndrome. *Curr Opin Psychiatry* 2006;19:233–8.
- [62] Vandrey R, Umbrecht A, Strain EC. Increased blood pressure after abrupt cessation of daily cannabis use. *J Addict Med* 2011;5:16–20.
- [63] Drugs-Forum. JWH-073 experiences. Substance Information Network (S.I.N.) Foundation; 2009. <<http://www.drugs-forum.com/forum/showthread.php?t=82829>> [accessed 08 August 2011].
- [64] Di Marzo V, Matias I. Endocannabinoid control of food intake and energy balance. *Nat Neurosci* 2005;8:585–9.
- [65] Beyer CE, Dwyer JM, Piesla MJ, Platt BJ, Shen R, Rahman Z, et al. Depression-like phenotype following chronic CB1 receptor antagonism. *Neurobiol Dis* 2013;9:148–55.
- [66] Moreira FA, Grieb M, Lutz B. Central side-effects of therapies based on CB1 cannabinoid receptor agonists and antagonists: focus on anxiety and depression. *Best Pract Res Clin Endocrinol Metab* 2009;23:133–44.
- [67] Bergman J, Delatte MS, Paronis CA, Vemuri K, Thakur GA, Makriyannis A. Some effects of CB1 antagonists with inverse agonist and neutral biochemical properties. *Physiol Behav* 2008;93:666–70.
- [68] Pertwee RG. Pharmacological actions of cannabinoids. *Handb Exp Pharmacol* 2005;1–51.
- [69] Cluny NL, Chambers AP, Vemuri VK, Wood JT, Eller LK, Freni C, et al. The neutral cannabinoid CB receptor antagonist AM4113 regulates body weight through changes in energy intake in the rat. *Pharmacol Biochem Behav* 2010;97:537–43.
- [70] Sink KS, Segovia KN, Collins LE, Markus EJ, Vemuri VK, Makriyannis A, et al. The CB1 inverse agonist AM251, but not the CB1 antagonist AM4113, enhances retention of contextual fear conditioning in rats. *Pharmacol Biochem Behav* 2010;95:479–84.
- [71] Kunos G, Osei-Hyiaman D, Batkai S, Sharkey KA, Makriyannis A. Should peripheral CB(1) cannabinoid receptors be selectively targeted for therapeutic gain. *Trends Pharmacol Sci* 2009;30:1–7.
- [72] Tam J, Vemuri VK, Liu J, Batkai S, Mukhopadhyay B, Godlewski G, et al. Peripheral CB1 cannabinoid receptor blockade improves cardiometabolic risk in mouse models of obesity. *J Clin Invest* 2010;120:2953–66.